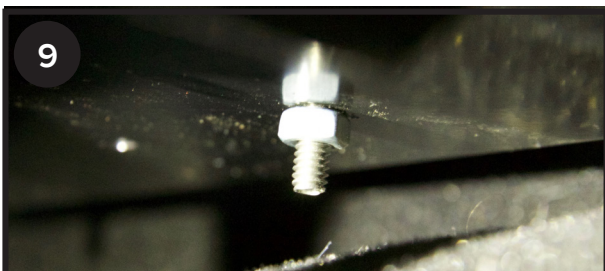
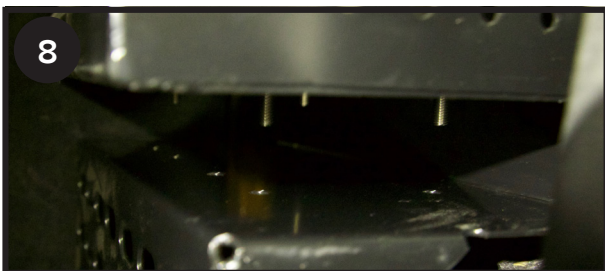
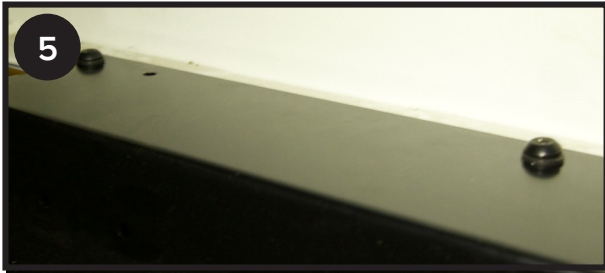
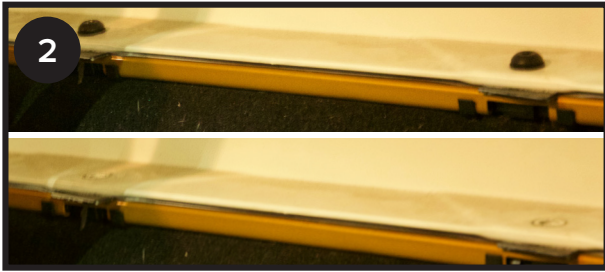


# JEEP AMMO CAN CARRIER MOUNT INSTALLATION INSTRUCTIONS



1. The MORryde Ammo Can Carrier can be installed on the driver or passenger side of the Jeep. Decide which side of the Jeep you prefer to have the carrier installed on.
2. Remove the (2) factory Torx head bolts above the rear wheel well on the desired side of the Jeep.
3. Install the (2) swivel feet into the bottom of the Ammo Can Carrier Mount.
4. Align holes on Ammo Can Mount with the holes on the Jeep where the (2) Torx head bolts were removed in Step 2. Ensure that the correct holes are aligned and that the mount is not rubbing against the rear seat.
5. Reinstall the (2) Torx head bolts to secure the Ammo Can Carrier Mount to the Jeep.
6. Adjust the swivel feet out until the mount is properly supported. When the feet are adjusted, the Ammo Can Carrier Mount should not bounce during travel.
7. Tighten the locking nut on the swivel foot against the bottom of the carrier to lock the feet in position.
8. Align holes in the bottom of the Ammo Can Tray with the set of holes on the Ammo Can Carrier Mount nearest to the rear of the Jeep.
9. Install Ammo Can Carrier using supplied 5/16" bolts and nuts.
10. Insert rubber tread into Ammo Can Carrier.



MORryde International, Inc.